



# OKSET®

www.okset.com - okset@okset.com

mold  
base



We work together  
reliably  
fastly  
processes controlled by OKSET ERP  
professionally

Submit your 3D drawing.

We manufacture accordingly with measuring report upon request.



### Special Mold Bases - Standard Mold Bases - Die Sets - Injection Mold Bases

Okset has been specialized at manufacturing of high precision standard and special plastic-metal injection mold bases, die sets, standard parts, special plates.



OKSET®

www.okset.com - okset@okset.com

OKSET MOLD BASE CO.  
Mavigöl District Abdullah Gül Street No:62  
Bolluca-Arnautköy/İSTANBUL - TURKEY  
Tel: +90 212 549 3770 (5 Line) Fax: +90 212 549 3772



# OKSET®

www.okset.com - okset@okset.com

mold  
base



### Standart Mold Base :

- The holes of guide bushes, pillars and main screws are machined to the plate at OKSET STANDARDS.
- You can download the catalogue from our website.



### Special Plastic, Metal Injection Mold Bases, Die Sets :

Designed by you as 3D and 2D drawings are machined at vertical, horizontal and 5 axis machining centers.

### Molds and punch standard components

Molded plates for synthetic material, metal molding and blanking tools with maximum dimensions from 2000x2000 mm to 1250x2500 can be manufactured in-house.

- quality steel in all current materials
- standard and customized drilled and non-drilled mold plates.



Molds and punch standard components are feasible according to the customer's drawings



OKSET®

www.okset.com - okset@okset.com

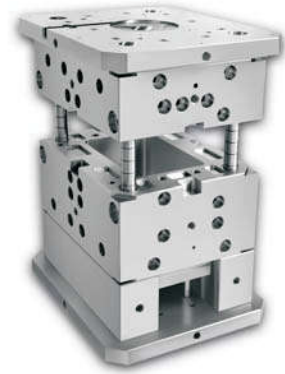
OKSET MOLD BASE CO.  
Mavigöl District Abdullah Gül Street No:62  
Bolluca-Arnavutköy/İSTANBUL - TURKEY  
Tel: +90 212 549 3770 (5 Line) Fax: +90 212 549 3772



# OKSET®

www.okset.com - okset@okset.com

mold  
base



### Mold bases and punch standard components

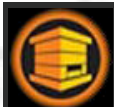
Special production such as: System drilling, milling groove, coolant drilling, groove drilling, etc.



-All of the molded plates and punch standard components are subject to 3D quality inspection before dispatch.  
The dimensions are 1000 x 1600



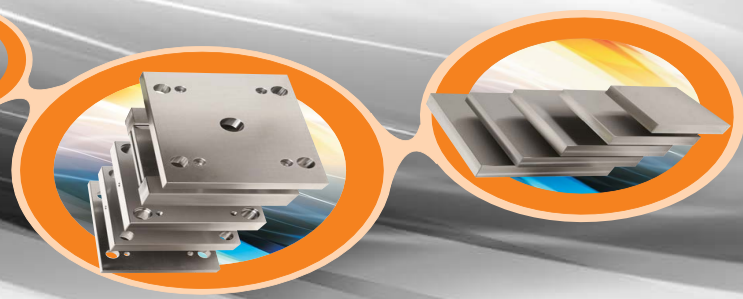
### P-plates in ground version



# OKSET®

www.okset.com - okset@okset.com

OKSET MOLD BASE CO.  
Mavigöl District Abdullah Gül Street No:62  
Bolluca-Arnavutköy/İSTANBUL - TURKEY  
Tel: +90 212 549 3770 (5 Line) Fax: +90 212 549 3772



## OKSET®

Okset, which has been serving for over 20 years, is a modern, innovative and ambitious company aiming at high quality production.

The fast developing of the plastic moulds and die sets industry in Turkey and worldwide market has increased the need and necessity of using mold bases. At ready made mold base manufacturing, we are striving to provide the best solution for our customers in terms of quality and delivery time, without compromising quality of material and workmanship, by minimizing the cost and delivery time to minimum level. For this reason, our machines are constantly being renewed, our employees are constantly being trained and Our manufacturing quality increases more day by day by using facilities of information technology sector. Production machines are kept in climate controlled rooms.

Beside domestic market, Okset exports mainly to Germany, Austria, Belgium, Netherlands, Luxembourg, France, Poland, Sweden, Ukraine and Italy, etc.

In the year 2000, The company Okset was founded by Mr Sayim Oktay in İstanbul.

In 2006, an internal quality management was established. The staff are continuously trained and instructed in terms of regard to production and quality.

In 2008, The Company okset had staff of over 100 and had reach annual sales of about 10 million Euros.

In 2009, the Okset GmbH was founded in Germany to provide a local contact componenter.

In 2013, Okset moved to the new plant in ARNAVUTKOY - ISTANBUL for the best services.

In 2014, Okset developed and activated a software by itself called OKSET ERP to control and record every process , every step of production, sales ,purchasing, etc.

### The following machinery is available



#### 5-axe machining center

- Starrag ZT 800 / 130 X=1600 Y=1250 Z=1320



#### Surface grinding machines

- ABA Ecoline 1007	X=1000	Y=700	Z=600
- ABA Multiline 2010	X=2000	Y=1020	Z=900
- ABA Multiline 1508	X=1500	Y=850	Z=850
- Milco Grinding	X=2000	Y=900	Z=920



#### Machining centers

- Hartford CNC	X=2000	Y=1970	Z=920
- Heckert CWK 800	X=1140	Y=910	Z=875
- Hedelius CNC BC125	X=1250	Y=2500	Z=770
- Hedelius CNC C80	X=800	Y=2300	Z=600
- Hedelius CNC C80	X=800	Y=1800	Z=600
- SHW CNC	X=1200	Y=900	Z=1000
- Tos Kurim	X=1600	Y=1000	Z=750



#### Milling machines

- DMC 60U	X=600	Y=700	Z=600
- DMC 80U	X=800	Y=700	Z=600
- DMC 700S	X=700	Y=500	Z=600
- Mazak CNC	X=1000	Y=750	Z=370
- Supermax 158-B CNC	X=1500	Y=760	Z=750
- Supermax 116-B CNC	X=600	Y=1100	Z=630
- Zayer CNC	X=1200	Y=3000	Z=1050



#### Deep-hole drilling

- Degen	X=860	Y=360	Z=800
- IXION TLF 1004	X=1000	Y=1000	Z=1500
- TBT 250NC	X=2000	Y=800	Z=180